



BETWEEN THE LINES

Taproot Theatre Company's
Subscription Newsletter
Volume 26, Issue 5

BOX OFFICE INFORMATION

Phone:
206.781.9707

Email:
box@taproottheatre.org

Box Office Hours:
Tuesday - Saturday,
Noon - 5 pm
*On performance days,
the box office phone
is answered until
30 minutes
prior to show time.*

**Tickets always
available online at
taproottheatre.org**

Producing Artistic Sponsors
John & Ann Collier

**Thank you to our 2018
Jewell Mainstage Season
Supporters!**



OFFICE OF ARTS & CULTURE
SEATTLE

Verity
Credit
Union

Nesholm Family
Foundation



Baskerville: A Sherlock Holmes Mystery closes Taproot's 2018 Jewell Mainstage Season

Holmes and Watson must solve a murderously funny mystery before Taproot's season ends! The "marvelously madcap" (*New York Times*) comedy, *Baskerville: A Sherlock Holmes Mystery*, based on Arthur Conan Doyle's *The Hound of the Baskervilles* will be directed by Producing Artistic Director, **Scott Nolte**. **Michael Patten** will don the iconic deerstalker while Dr. Watson will be brought to life by **Reginald André Jackson**.

Sherlock Holmes is back and searching for clues to explain a mysterious death on a haunted moor. Five fearless actors conjure over 35 characters to deliver laughter and chills in this dizzyingly inventive adaptation of The Hound of the Baskervilles. Bite your nails and howl with delight as Holmes and Watson face their most diabolical case ever.

Nolte's extensive directing credits most recently include *Camping with Henry and Tom*, *Relativity*, *Busman's Honeymoon*, *Evidence of Things Unseen*, *The Trial of Ebenezer Scrooge* and *Joyful Noise* at Taproot Theatre. He also directed both productions of Taproot's *Sherlock Holmes and the Case of the Christmas Carol*.

The cast features **Eric Hampton** (Taproot Theatre's *Room Service*) as Actor One, **Reginald André Jackson** (Seattle Repertory Theatre's *Two Trains Running*) as Doctor Watson, **Elizabeth Keck** (Regent Theatre's *Much Ado About Nothing*) as Actress One, **Michael Patten** (ACT Theatre's *The Crucible*) as Sherlock Holmes and **Nick Watson** (Taproot Theatre's *A Civil War Christmas*) as Actor Two.

The production team includes **Richard Lorig**, scenic design; **Melanie Burgess**, co-costume design; **Nina Bice**, co-costume design; **Mark Lund**, sound and projections design; **Brian Engel**, lighting design; **Abigail Pishaw**, stage manager; **Andrea Kovich**, dramaturg and **Ben Wippel**, dialect coach.

Following Ken Ludwig's *Baskerville: A Sherlock Holmes Mystery* is **Miss Bennet: Christmas at Pemberley** by Lauren Gunderson and Margot Melcon. The holiday comedy will play November 21 – December 29, 2018.

PERFORMANCE INFORMATION

Previews: Sep 12 & 13 at 7:30pm | **Opening:** Sep 14 at 8:00pm
Running: Sep 12 - Oct 20 | **PWYC:** Sep 19 at 7:30pm
Show Times: Wed & Thur, 7:30 pm; Fri & Sat, 8:00 pm; Sat Matinee, 2:00 pm
Running Time: Approximately 2 hours and 10 minutes
including one 15-minute intermission

Baskerville: A Sherlock Holmes Story
is recommended for ages 12 and above.

Actor Spotlight: An Exclusive Interview with Holmes and Watson



Michael Patten (left) plays Sherlock Holmes and Reginald André Jackson (right) plays Dr. Watson in *Baskerville: A Sherlock Holmes Mystery* at Taproot Theatre.



What are you most excited about for this production?

Reginald André Jackson (RJ): Getting the chance to explore the relationship of these two incredibly iconic characters, with my friend Michael Patten.

Michael Patten (MP): Yeah. Playing such a legendary character. And getting to work with Taproot for the first time!

What made you decide to become an actor?

RJ: A love of stories and the idea that I could take part in that.

MP: It was the best way for me to extend my childhood and keep my imagination fertile. Also, my high school acting teacher was a deeply compassionate person who illustrated exemplary human behavior to me.

Do you like dogs? Do you have a favorite story about a dog you've met?

MP: I once went into the wrong house with a friend for a party. (The doors were open and we were one house away from the correct address.) There were two very large Rottweilers in there and I can only surmise that the reason we made it out alive is due to the fact that we thought we were in the correct house and therefore we weren't threatening to the dogs. They were definitely suspicious of us though.

RJ: We got our family dog, Marley, (named not after Jacob, but Robert Nesta aka "Bob") from the Echo Glen Children's Center, as part of their *Canine Connections* program, where juvenile offenders rehabilitate problem dogs as part of their own rehabilitation. I have to give an honorable mention to a gigantic teddy bear of a dog I met about a month ago, who greeted me in the sweetest, most playful manner, before seeing my hat and turning into Cujo.

Are you a Sherlock Holmes fan? Do you have a favorite story or adaptation?

RJ: I am a major Holmes fan. *The Hound of the Baskervilles* is probably my favorite of the Conan Doyle stories. Nicholas Meyer's *Seven Percent Solution* is pretty great too.

What's the best piece of advice you've ever been given, theatrical or otherwise?

MP: Try to view things from other people's perspectives, without abandoning your own principals.

RJ: When I was in high school a guest artist was asked what advice he'd give to young people starting out in theatre. He said, "Quit." He wasn't being flippant. If you can't quit you've found your calling. If you can, you'll save yourself a lot of rejection, and maybe a little money.

Why should people see this show?

MP: It is a very fast paced and funny re-telling of a classic tale.

RJ: It's a hoot. It's a mystery, a comedy and love letter to the theatre all rolled into one. Enjoy!

Production Spotlight: An interview with co-costume designer Melanie Burgess

Baskerville: A Sherlock Holmes Mystery features five actors playing over 35 characters. That means co-costume designers Melanie Burgess and Nina Bice had their hands full organizing a lot of costume changes!

How do you keep all the costume pieces straight? We're already tired (and excited!) just thinking about it.

Melanie Burgess (MB): Paperwork! Diligently reading the script and color-coding the paperwork has been essential.

Can you tell us your secret to making sure the costume changes happen in time?

MB: Again, paperwork. Nina read the script out loud to guess at the length of the quick change in order to alert all parties and we designed the costumes around those needs. We also incorporated transformational pieces to accommodate the quick changes that needed to happen on stage in front of the audience.

What design can you not wait to see come to life?

MB: The tiny pith helmet and the transforming skirt/cape.

Did you have to go in search of any special materials to create the costumes?

MB: We used upholstery fabric for the skirt/cape because of our interest in the ideal weight and type of pattern for the needs of that particular costume.

If you had to pick one costume to wear to a costume party, which would you choose?

Sherlock's suit for sure!

Which character has been the most fun to work on?

Sir Henry—a gentleman of the old west—how much fun is that!

Do you have any costume tips or tricks to share in preparation for Halloween?

Don't get a costume out of a plastic bag! Be inventive. After all, on Halloween...anything goes!



Costume designs and renderings by
Melanie Burgess and Nina Bice.

Sherlock Holmes: The Most Popular Fictional Character of All Time



Terry Edward Moore
as Sherlock Holmes in
***Sherlock Holmes and the
Case of the Christmas Carol***
at Taproot Theatre in 2010.
Photo by Eric Stuhau.

In 2012 the “Guinness Book of World Records” recognized Sherlock Holmes as the most portrayed literary human character in film and television, besting William Shakespeare’s Hamlet by 48 portrayals. The character’s popularity has built a worldwide fan base and inspired a whole genre of literature.

The cunning consulting detective from 221B Baker Street first appeared in 1887 in Sir Arthur Conan Doyle’s novel *A Study in Scarlet*. Holmes’ adventures proved to be such a hit for Conan Doyle that he wrote him into a total of four novels and 56 short stories from 1887 – 1927.

Almost immediately, Sherlock Holmes and his assistant Dr. Watson were among the most popular literary characters ever written. The stories were so popular that Conan Doyle, frustrated by how much his detective stories were distracting from his more serious writing, attempted to kill off Holmes in the short story “The Final Problem,” published by *The Strand* magazine in 1893.

In today’s Twitter-fueled world, fan outrage is a common phenomenon but in mid-1890s England, the reaction to Holmes’ death was unlike anything ever before seen in popular culture. Subscriptions to *The Strand* dropped by 20,000, nearly bankrupting the magazine.

For eight years the pressure continued until Conan Doyle finally gave in and, in 1901, published a new Sherlock Holmes novel, *The Hound of the Baskervilles*, which took place prior to Holmes’ death. Then, in the 1903 short story “The Adventure of the Empty House,” Conan Doyle accepted the wishes of his readers by resurrecting Holmes and revealing that the detective had actually faked his death.

In the 131 years since *A Study in Scarlet* first debuted the popularity of Sherlock’s adventures has not ceased. Through thousands of adaptations and homages in literature, stage, film, television and other media, Holmes and Watson have transcended beyond Conan Doyle’s original works. To this day, modern adaptations, such as CBS’s *Elementary* and BBC’s *Sherlock* television series, continue to thrill fans.

Sherlock Holmes made his Jewell Mainstage debut in 2010 with *Sherlock Holmes and the Case of the Christmas Carol*. The production was so popular that it was remounted in 2012. Both stagings still stand among the most successful shows in Taproot Theatre’s history.

Miss Bennet: Christmas at Pemberley



Nov 23 - Dec 29

**Merry Christmas
from Mr. and Mrs. Darcy of Pemberley Estate!**

In this witty sequel to *Pride and Prejudice*, bookish middle-sister Mary pounds her pianoforte alone until a curious visitor drops hints of being her intellectual match. Seizing the opportunity to be the heroine of her own story, Mary pursues her equal. This funny, smart and romantic comedy makes for a most stylish holiday outing.

**Special Early-Bird pricing available
for these select dates:**

Sat, Nov 24 | Wed, Nov 28 | Thu, Nov 29 | Fri Nov 30

Christmas Dinner packages available:

Wed, Dec 5 | Thu, Dec 6

*Save 15% or more when you purchase 8 or more tickets
to any other performance.*

Tickets on sale now!

Visit taproottheatre.org/miss-bennet/
or call the box office at 206.781.9707

2019 Season: Family Ties

The deadline to renew your subscription is September 21!

Arsenic and Old Lace

by Joseph Kesselring
January 23—March, 2019

The Brewsters are an eccentric bunch: Mortimer's a theatre critic, his brother thinks he's Teddy Roosevelt and Aunts Abby and Martha are the most gracious killers. When Mortimer casually proposes to the pastor's daughter he unwittingly opens the lid on buried family secrets. As strangers and cops keep calling, the Brewsters will go to hilarious lengths to protect the skeletons in the cellar.

We Will Not Be Silent

by David Meyers
Mar 20—April 27, 2019

Twenty-one-year-old Sophie Scholl is a college student, anti-Nazi activist and, along with her brother, a member of The White Rose resistance. Charged with treason and held in a German prison, Sophie is forced to play a psychological game of cat and mouse as she fights for her life and soul with a Nazi interrogator. This emotionally charged story testifies to the courage required to live out your values.

Kim's Convenience

by Ins Choi
May 15—June 22, 2019

Enter *Kim's Convenience* store and meet the Kims, a loving, if imperfect, Korean family making their way in Toronto. As they face an uncertain future Appa (dad), Umma (mom), their unmarried daughter Janet and disappointing son Jung learn to see each other in a new light. This hilarious and heartwarming story reminds us that family isn't always convenient, but it might be the best deal out there.

Bright Star

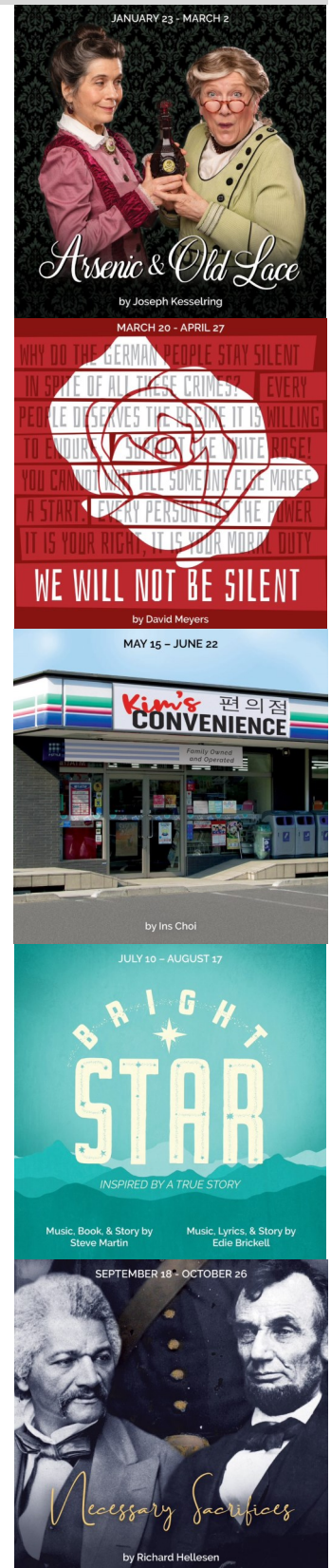
Music, Book & Story by Steve Martin
Music, Lyrics & Story by Eddie Brickell
July 10—August 17, 2019

Under a serene North Carolina sunset, a simple summer romance blossoms into true love. When Alice and Jimmy Ray's parents forbid their union, the young couple are propelled into a daring future. Inspired by a true story, this powerful tale of love and redemption will make your heart soar and your toes tap. Hold on, love is coming home.

Necessary Sacrifices

by Richard Helleeson
September 18—October 26, 2019

Eavesdrop on history as abolitionist and Union recruiter Frederick Douglass challenges his president to act on the statement that "all men are created equal." Glimpse into the hearts and souls of two brilliant Americans as their choices affect not only their sons, but the future of a nation. This battle of ideas is based on documented meetings, public speeches and personal writings.



Playing in the Isaac Studio: Cyla's Gift. Playing September 27 - October 13



Coming Soon to the Isaac Studio: September 27 - October 13, 2018

Cyla's Gift

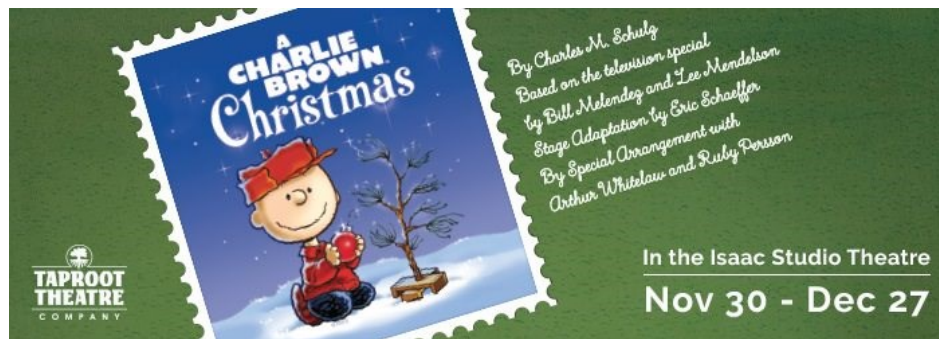
Written and Performed by Samara Lerman.
Directed by Kelly Kitchens

What happens when your family lineage stops with you? What happens to the stories and memories of generations past? When the ghost of her grandmother starts visiting her at night, Samara is compelled to travel through interwoven family stories of survival. *Cyla's Gift* is a train-hopping, border-crossing story of danger, adventure, magic, loss, and the power of storytelling.

Save \$5 per ticket when you use the codeword "Cyla" online or by phone.

Select "Adult" price and apply the discount code in your cart. Not valid on previously purchased tickets and may not be combined with any other offers. Card fees may apply. All sales are final, no refunds or returns.

The All-Ages Tradition Continues: A Charlie Brown Christmas



Coming to the Isaac Studio: November 30 - December 27, 2018

A Charlie Brown Christmas

By Charles M. Schulz
Based on the television special by Bill Melendez and Lee Mendelson
Stage Adaptation by Eric Schaeffer
By Special Arrangement with Arthur Whitelaw and Ruby Persson

This delightful family-friendly favorite is back to spread holiday cheer!

Charlie Brown is depressed by the never ending commercialism surrounding the holidays. Thankfully, Linus is there to help him find the true meaning of Christmas in this musical adaptation of the cartoon classic.

New this year: \$5 Lap Child tickets when purchasing an accompanying Adult ticket.

Subscriber Rewards Spotlight: Last Chance for 2018 Subscriber Rewards Discounts



The Cookie Counter

7415 Greenwood Ave N. Seattle, WA 98103

seattlecookiecounter.com

Discount: 2 for 1 single scoop when using your Subscriber Rewards Card.

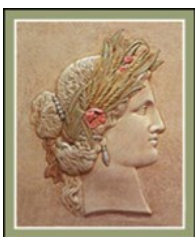


Flying Bike Cooperative Brewery

8570 Greenwood Ave N. Seattle, WA 98103

flyingbike.coop

Discount: \$1 off your first beer when you show your rewards card and a ticket stub from a recent show at Taproot theate!



Georgia's Greek Restaurant and Deli

323 NW 85th St, Seattle, WA 98117

georgiasgreekrestaurant.com

Discount: Buy one appetizer and get a second one free when using your Subscriber Rewards Card



Greenwood Vision

133 N 85th St. Seattle, WA 98103

greenwoodoptical.com

Discount: 10% off on glasses or contacts when you mention code TPG017



Hounds Tooth Public House

8551 Greenwood Ave N. Seattle, WA 98103

houndstoothpublic.com

Discount: 10% all purchases when using your Subscriber Rewards Card. Cannot combine with other discounts.



Ladywell's Vitality Spa & Sauna

8538 1st Ave NW. Seattle, WA 98177

ladywells.com

Discount: 10% off entry when you present your Subscriber Rewards Card.

2018 Subscriber Rewards Discounts Expire October 20



Luso Food and Wine

8218 Greenwood Ave N, Seattle, WA 98103

lusoseattle.com

Discount: \$1 off Portuguese Wine and small plates. \$3 off large plates. Luso Special: \$5 off Happy Hour Food Menu, wine or beer from 3 PM - 6 PM, Wednesday to Saturday.



Modern Japanese Cuisine

6108 Phinney Ave N, Seattle, WA 98103

modern-seattle.com

Discount: 10% off of the total when you present your Subscriber Rewards Card.



Naked City Brewery & Taphouse

8564 Greenwood Ave N, Seattle, WA 98103

nakedcitybrewing.com

Discount: Naked City offers a 10% discount to all Taproot Theatre patrons! Show your playbill or ticket to your server or bartender to receive the discount on the night of the show.



The Olive and Grape

8516 Greenwood Ave N, Seattle, WA 98103

theoliveandgrape.com

Discount: 10% discount off your bill when you present your Subscriber Rewards Card.

SATAY BAR

Satay Bar

8317 Greenwood Ave N, Seattle, WA 98103

sataybar.net

Discount: Present your Subscriber Rewards Card and receive 10% off.



Seatown Veterinary Care

8542 1st Ave NW, Seattle, WA 98117

seatownvet.com

Discount: Show your Subscriber Rewards Card and receive 10% off on all professional services (does not include lab work or prescriptions/OTC products).